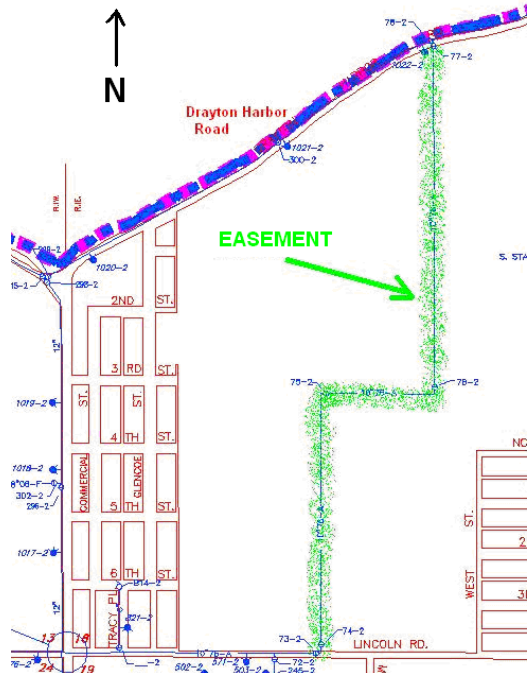


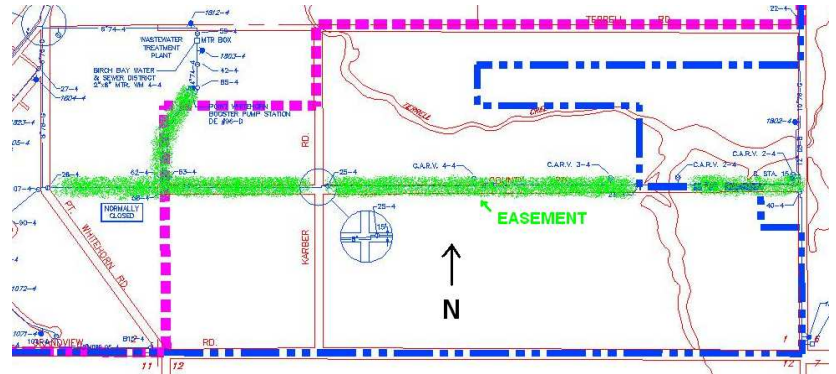


Birch Bay Water and Sewer District to begin Easement Clearing *Lincoln-Drayton Harbor; Karber-Jackson*

Clearing prevents damage to water line and allows for pipe maintenance and repair.



To remove overgrowth, protect the water line, and maintain emergency access for maintenance crews, the Birch Bay Water & Sewer District will work with a Contractor to begin clearing brush and small trees from the water line easement from Karber to Jackson Road, and, from Lincoln to Drayton Harbor Road.



Easement from Lincoln to Drayton Harbor

Easement from Karber to Jackson Road

Easements are areas officially reserved for utilities (such as water and sewer pipelines) that provide for pipe installation, maintenance and repair activities. Easements are usually 20 to 30 feet wide and need to remain clear of trees, heavy brush, and structures.

The Contractor will utilize a large brushing & chipping device mounted on a small excavator (with tracks) that can swing back and forth to minimize the track/tire imprint, while leaving the chips and shredded material on location. This method provides mulch and nutrients for surrounding plants, minimizes erosion, and ensures that the impact on the environment and local ecosystem is minimal.

Residents who may have inadvertently planted trees, ornamental shrubs or other landscaping in the easement should consider replanting them outside the easement area. Because this is a construction activity, residents are requested to keep themselves and their pets at a safe distance of at least 120 ft while brushing and clearing is underway. The clearing activity is scheduled to begin in mid September and should be complete by mid-October 2010.

Residents may contact Mike Sowers, District Operations' Manager at (360) 371-7100 if they have questions or concerns.