

# WATER LINES

**BIRCH BAY WATER AND SEWER DISTRICT**

Serving the Greater Birch Bay Area Since 1968

Summer Newsletter 2008

## Water Conservation - Regional Collaboration

The District has been working with other local governments to enhance regional water conservation programs through better coordination of public information and education activities. A number of agencies have participated in these discussions - the District, Blaine, Ferndale, Lynden, Sumas, Everson, Bellingham, Point Roberts, Lake Whatcom and other districts. The participants have recommended a voluntary watering schedule to reduce stress on water supplies during the warm summer months, when outdoor usage soars. To that end, the District is asking our customers to alternate their watering days, following the odd-even calendar shown below. In addition, we ask our customers to continue with wise watering practices, especially limiting lawn-watering to 1" per week, which is all turf grasses need to stay green and healthy. By managing our demand more effectively, the District can delay the need to build costly peaking facilities and save money for you the ratepayers. Thanks for your help conserving water this summer!

## Drayton Harbor Waterline Replacement

The District is using pipe bursting technology to replace 7,000 feet of existing watermain along Drayton Harbor Road. Pipe bursting technology was chosen for the project because it minimizes the impact to the surrounding area and is less expensive than traditional open-cut trenching. It allows the District to replace the 2.5" PVC pipe with 4" HDPE pipe without digging up the entire 7,000 feet of waterline. The existing watermain pre-dates the District and is being replaced due to age, leaks and to coordinate with the County's asphalt overlay project on Drayton Harbor.

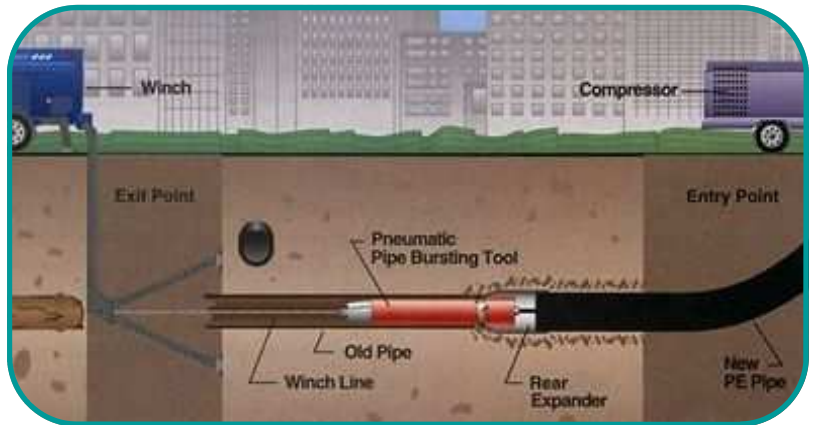


Diagram of Pneumatic Pipe Bursting Process

# WATERING SCHEDULE

June 15 — September 15

SUN	MON	TUES	WED	THURS	FRI	SAT
ODD	No Watering	EVEN	ODD	EVEN	ODD	EVEN

The District will begin implementing a voluntary watering schedule effective June 15th through September 15th. Residents with odd numbered street addresses can water on Wednesdays, Fridays and Sundays. Residents with even numbered street addresses can water on Tuesdays, Thursdays and Saturdays, Mondays are non-watering days to allow the District's reservoirs to recharge after the weekend. **LAWNS ONLY NEED 1" OF WATER PER WEEK—WATER WISELY!** For more information visit [www.bbwsd.com](http://www.bbwsd.com) or contact the District at 360-371-7100.

## Did You Know!

Some experts estimate that more than **50%** of water used for irrigation is wasted due to evaporation, improper system design and overwatering.



### Published by

Birch Bay Water & Sewer  
7096 Pt. Whitehorn Rd.  
Birch Bay, WA 98230  
Phone: (360) 371-7100  
Fax: (360) 371-2806  
Website: www.bbwsd.com

### Commissioners:

Don Monfort  
Carl Reichhardt  
Patrick Alesse

### General Manager:

Roger M. Brown

## Simple Solutions to Reduce Outdoor Water Waste

**1. Change with the Seasons**—Familiarize yourself with the settings on your irrigation controller and adjust the watering schedule regularly to conform with seasonal weather conditions.

**2. Watch the Clock**—Water between the evening and early morning when the temperatures are cooler and



winds calmer to reduce evaporation. You can lose as much as 30% of water to evaporation by watering mid-day.

**3. Think Native**—Use native plants that are adapted to your climate and require less watering to reduce outdoor water use by 20 to 50 percent.



**4. Make it a Date**—Perform regular maintenance on your

irrigation system. Proper maintenance can reduce irrigation water by 15 percent or about 9,000 gallons annually – the same amount as a garden hose running non-stop for nearly a day.



**5. Go in the Right Direction**—Set sprinklers to water the lawn or garden only – not the street or sidewalk.

## Discovery Days



**Mark your calendar!** This year Discovery Days is scheduled for July 19th and 20th. The District will once again be participating in the parade and will have a booth in the Arts and Crafts Fair,

which will be located at the Sealinks Golf Course. District representatives will be on site to answer any questions you might have and offer information on District programs. We look forward to seeing you at this fun, local event!

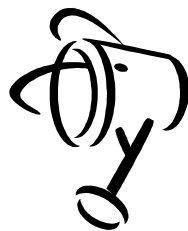
## Credit Rating Upgrade

At the Board of commissioners' meeting of May 8<sup>th</sup>, District staff announced that Birch Bay Water & Sewer achieved a credit rating upgrade. As part of a refinancing of the District's 1997 bond debt, Moody's Investors Service assigned an A3 rating, an improvement over the Baa1 assigned to the 1997 issue. According to Moody's, "the A3 rating reflects the district's low levels of debt and rapid payout; sound coverage of debt service and satisfactory financial operations." The ratings upgrade helped the District issue lower interest bonds, thus achieving interest expense savings in excess of \$90,000 over the next five years. The improved credit rating will also save money for ratepayers by reducing the cost of the District's future borrowing for capital improvements.

## WATERING EXEMPTIONS

The Voluntary Watering Schedule does not apply to the following situations:

- Drip irrigation systems or handheld watering methods
- Limited capabilities with existing older irrigation controller or devices
- Watering of flower and vegetable gardens
- Watering newly planted lawns

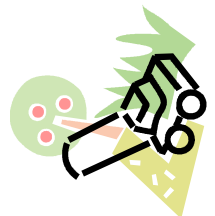


## OUTDOOR WATERING TIPS

**Only water your lawn when it needs it.** If you leave footprints in your lawn, it's time to water.

**One Inch Per Week!** Turf-grasses only need 1 inch of water per week to stay green and healthy.

**Adjust mower height.** Longer grass shades root systems and holds soil moisture better than closely clipped lawns.



**Regularly check and adjust your sprinklers.** Water only your lawn, not your sidewalk or driveway.